

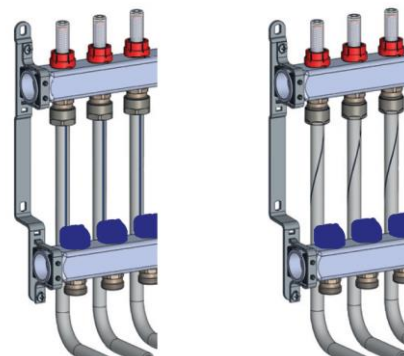
# Adaptors for multilayer and pex pipe

## Art.697ek



100% MADE IN ITALY 

**Function** Pintossi+C universal adaptors for multilayer pipe and pex pipe are fittings for the connection between thread and pipe.  
The adaptor has an innovative **anti-twist system**, which prevents the tube from twisting during the closing phase with a key or pipe wrench. This system guarantees an easy and quick installation of the pipe, especially in the connection between collectors and pipe inside the inspection boxes. Furthermore, potential mechanical tensions on the manifold or valve connections are avoided.



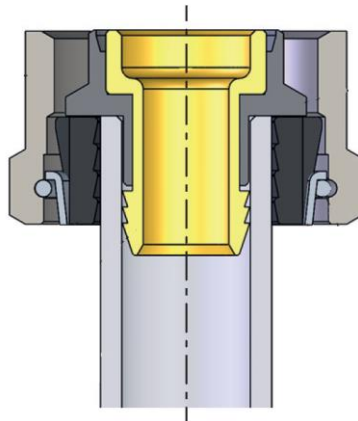
**Product range** Art. 697ek 3/4" eurocono 16x2 - 16x2,25 - 17x2 - 18x2 - 20x2 - 20x2,5

**Technical specifications**

Fluids:	Water or glycol solution
Glicole max:	30%
Max working temp.:	100°C
Max working pressure:	10 bar

## Materials

Nut:	Brass CW617N
Internal adaptor:	Brass CW614N
Adaptor cover:	NBR
Ogive:	Nylon
Support ring:	Steel/Stainless steel



## Installation

It's very important to follow the following steps to make a correct installation:

- The pipe cut must be done in the correct way, as much as possible perpendicular with pipe axis, using the proper tooling depending on the material;
- Make calibration and countersink operations to obtain the desired internal diameter and a bevel to make the operation of adaptors installation easier;
- Insert the nut including the ogive and anti-twist ring into the pipe with the female threaded part facing the male fitting;
- Insert the adapter (the side with NBR cover) into the connection and the hose fitting inside the tube;
- Screw the nut in the connection to be linked using the appropriate tools up to the point of proper sealing.

## Fluid characteristics

Reference standard for water treatments in heating systems is Norm UNI 8065:2019 which regulates the parameters that must be observed to avoid scale and corrosion phenomena.

In order to grant product warranty, the fluid characteristics must comply with the rules in force in the country of relevance or at least present features not less to the ones prescribed by the Norm UNI 8065:2019.

In particular, minimum standards necessary but not sufficient to control are the following:

Fluid aspect: Limpid

PH: Between 7 and 8

Iron (FE): < 0,5 mg/kg (< 0,1 mg/kg for steam)

Copper (CU): < 0,1 mg/kg (< 0,05 mg/kg for steam)

Antifreeze: Passivated Propylene Glycol

Conditioning: as indicated by the producer

In any case when using antifreeze and conditioning solutions, is required to control and verify the correct compatibility between these substances and the construction materials stated in Pintossi+C technical datasheet.